



Frequently Asked Questions

All Categories » Simian

Recycled program logs with time cues firing incorrectly

Simian users who use the same program logs over and over, modifying it regularly to update content can run in to issues where time events do not fire correctly at there scheduled times, items get skipped over, or even repeat. The program log is a type of database and as items are moved, added, and deleted, a reference number field assigned to each event in the program log gets out of order. After a certain amount of time, typically after several weeks of constant updating, the recycled log's reference numbers get so out of whack it causes the issues described above.

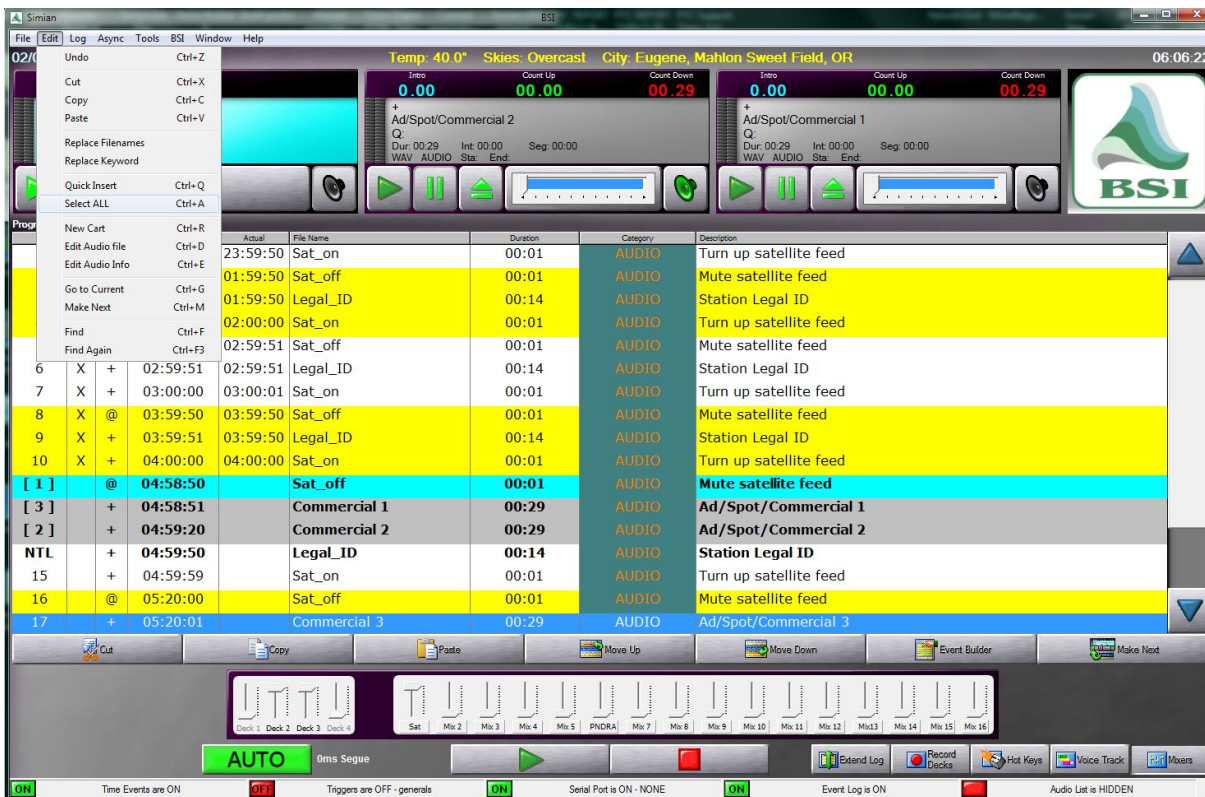
To reset the reference numbers, the recycled log can be copied and pasted in to a new program log. The new program log can then be saved to overwrite the recycled log. Repeating this process on a weekly or bi-weekly schedule should avoid those types of issues going forward.

Step one: Open the program log in Production mode (in the example we are using the WED.bsi program log)

#	Status	Cue	Scheduled	Actual	File Name	Duration	Category	Description
1	X	+	00:00:00	23:59:50	Sat_on	00:01	AUDIO	Turn up satellite feed
2	X	@	01:59:50	01:59:50	Sat_off	00:01	AUDIO	Mute satellite feed
3	X	+	01:59:51	01:59:50	Legal_ID	00:14	AUDIO	Station Legal ID
4	X	+	02:00:00	02:00:00	Sat_on	00:01	AUDIO	Turn up satellite feed
5	X	@	02:59:50	02:59:51	Sat_off	00:01	AUDIO	Mute satellite feed
6	X	+	02:59:51	02:59:51	Legal_ID	00:14	AUDIO	Station Legal ID
7	X	+	03:00:00	03:00:01	Sat_on	00:01	AUDIO	Turn up satellite feed
8	X	@	03:59:50	03:59:50	Sat_off	00:01	AUDIO	Mute satellite feed
9	X	+	03:59:51	03:59:50	Legal_ID	00:14	AUDIO	Station Legal ID
10	X	+	04:00:00	04:00:00	Sat_on	00:01	AUDIO	Turn up satellite feed
[1]	@		04:58:50		Sat_off	00:01	AUDIO	Mute satellite feed
[3]	+		04:58:51		Commercial 1	00:29	AUDIO	Ad/Spot/Commercial 1
[2]	+		04:59:20		Commercial 2	00:29	AUDIO	Ad/Spot/Commercial 2
NTL	+		04:59:50		Legal_ID	00:14	AUDIO	Station Legal ID
15	+		04:59:59		Sat_on	00:01	AUDIO	Turn up satellite feed
16	@		05:20:00		Sat_off	00:01	AUDIO	Mute satellite feed
17	+		05:20:01		Commercial 3	00:29	AUDIO	Ad/Spot/Commercial 3

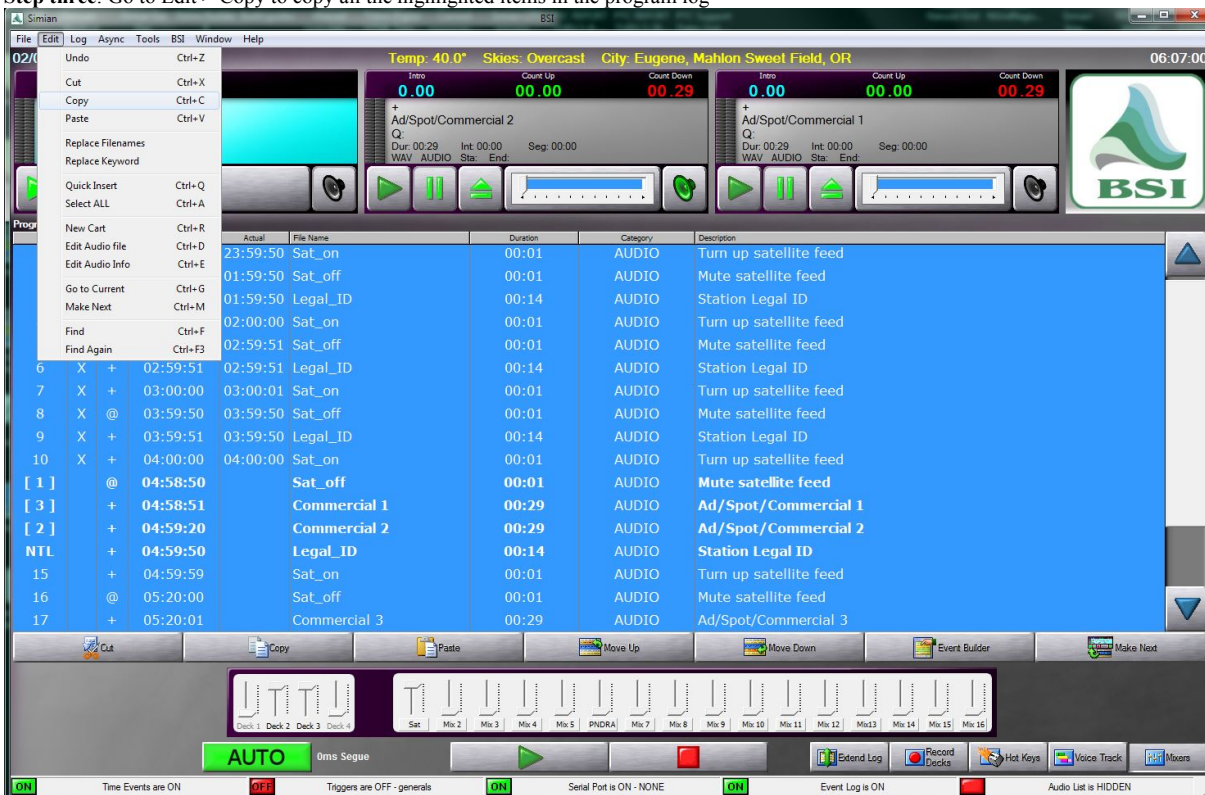
Step
one

Step two: Go to Edit > Select ALL to highlight all the events in the program log



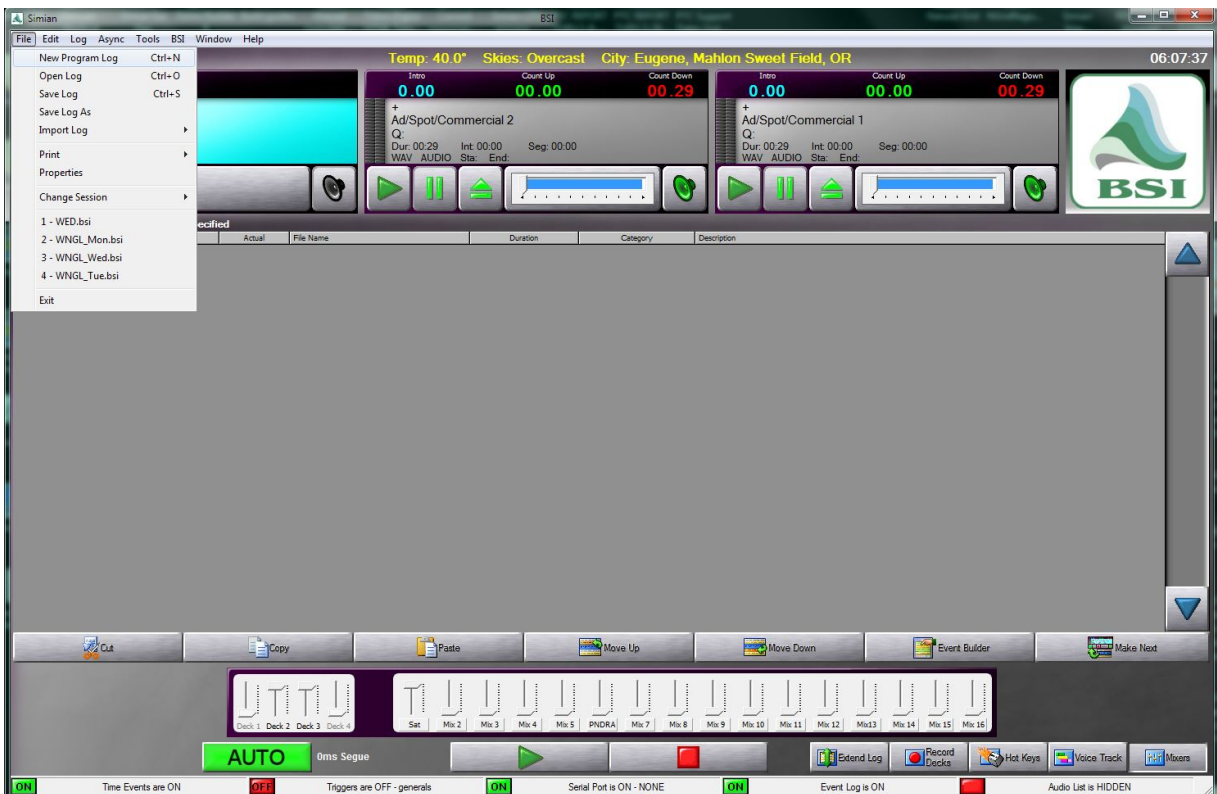
Step
two

Step three: Go to Edit > Copy to copy all the highlighted items in the program log



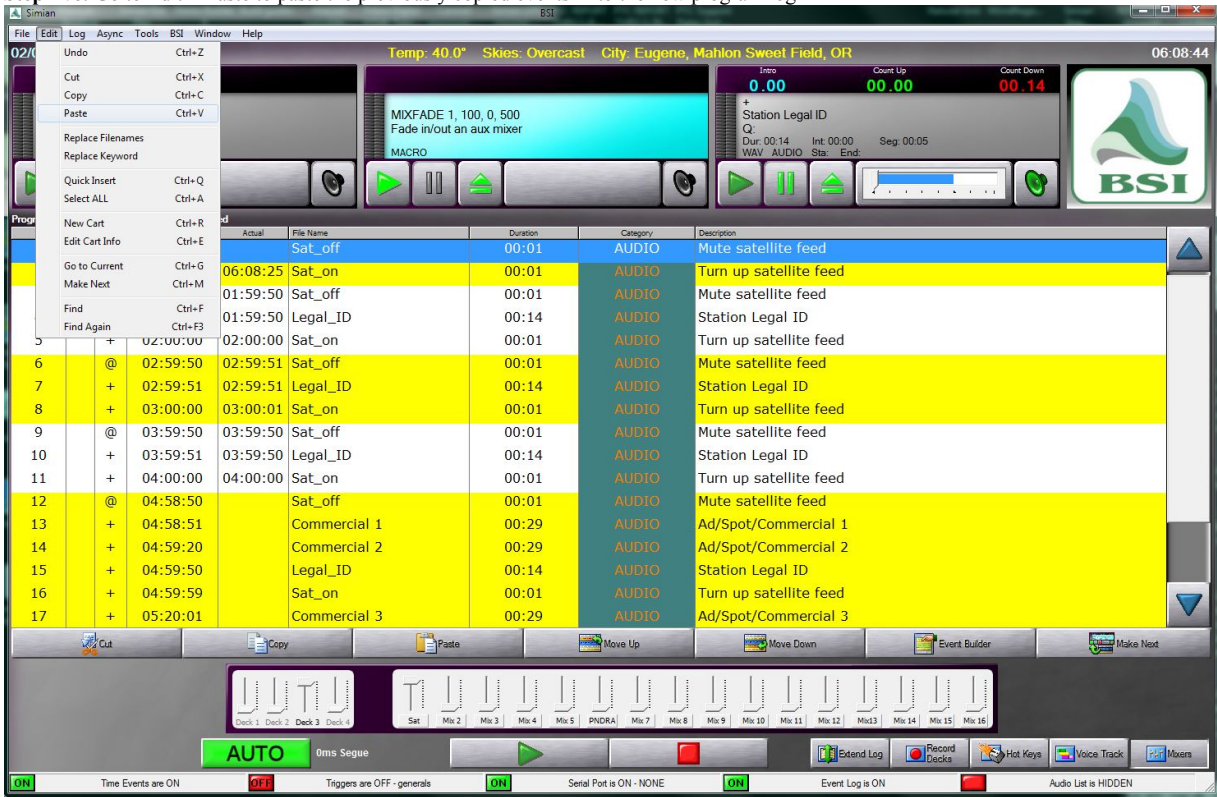
Step
three

Step four: Go to File > New Program Log to get a new, blank program log



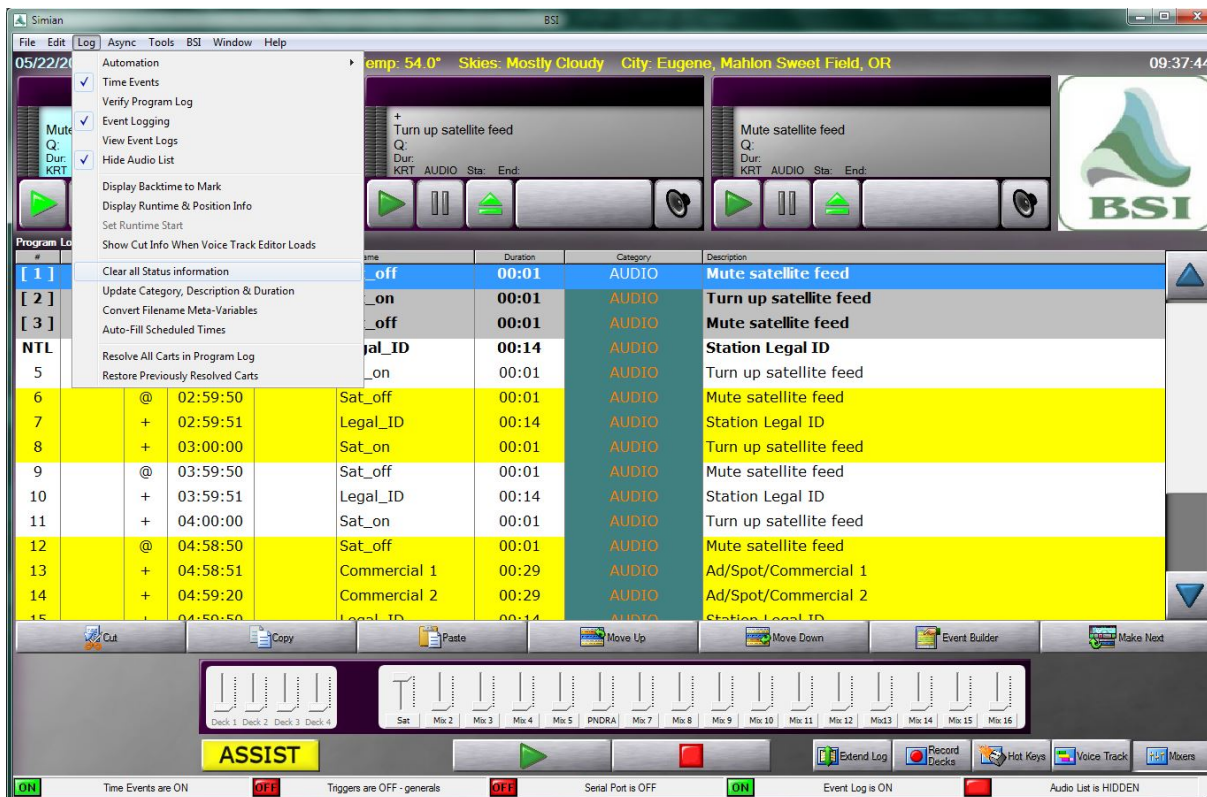
Step four

Step five: Go to Edit > Paste to paste the previously copied events in to the new program log



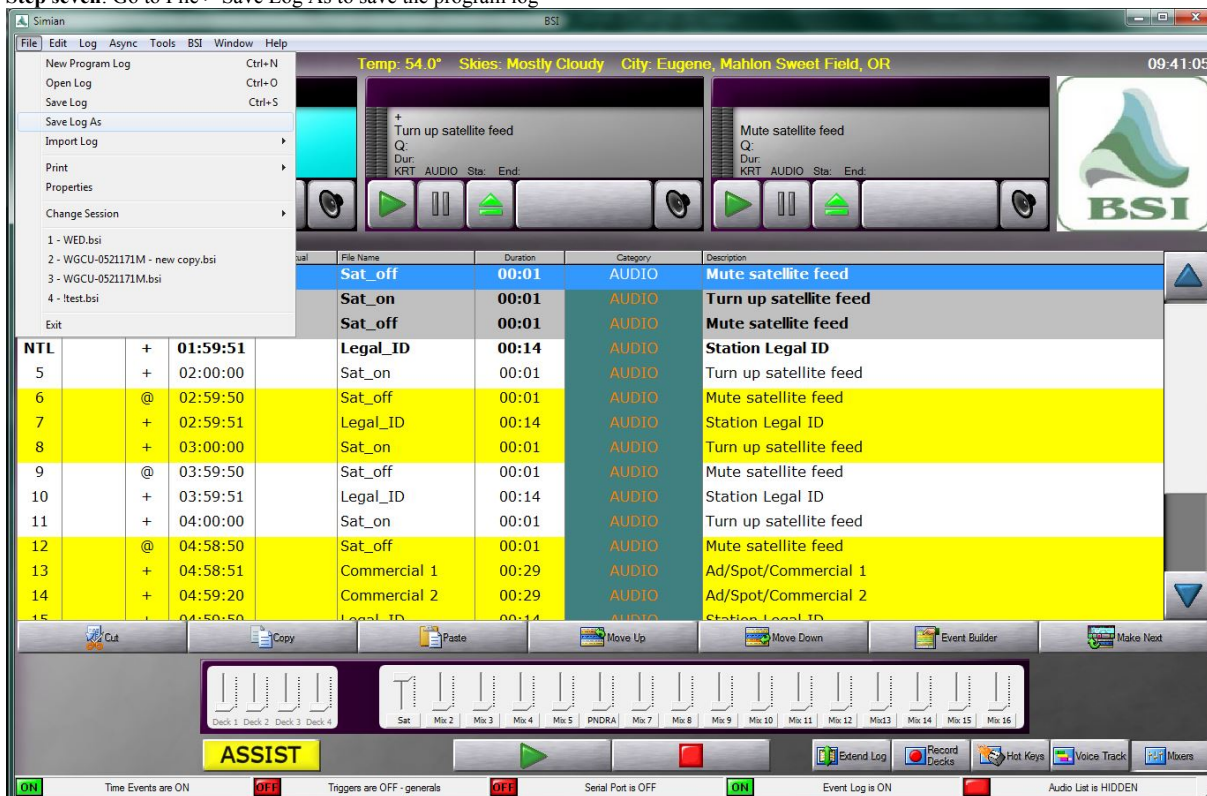
Step five

Step six: Go to Log > Clear all status information to clear previously stored played status and played time data



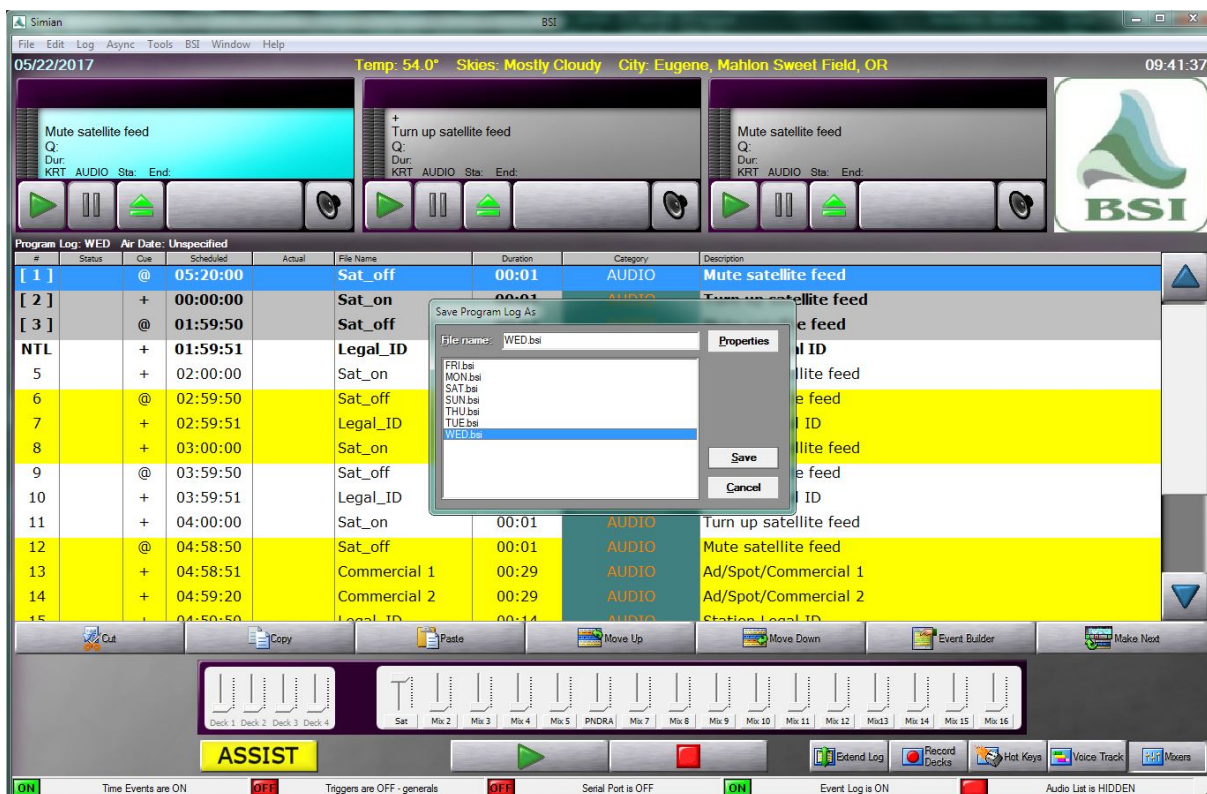
Step
six

Step seven: Go to File > Save Log As to save the program log



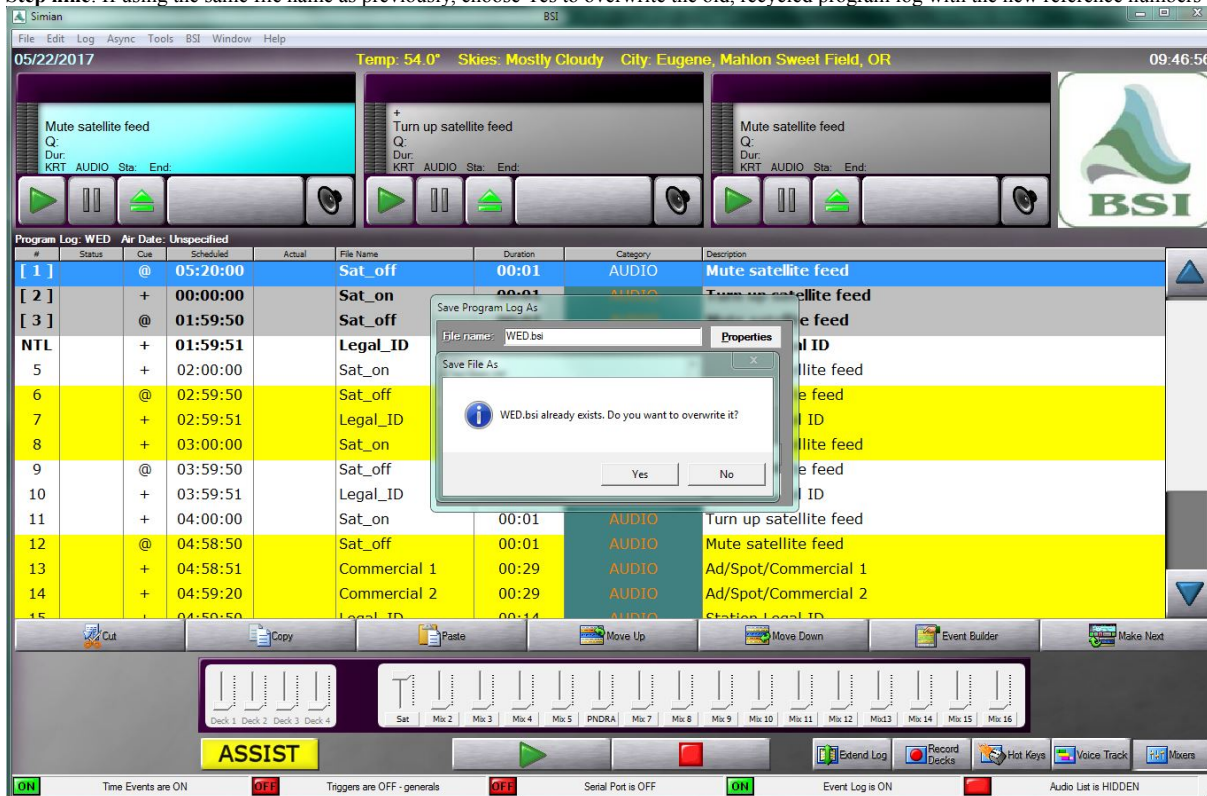
Step
seven

Step eight: Here you can choose to save the program log with the same name or give it a different name (in the example we are using the same WED.bsi file name)



Step
eight

Step nine: If using the same file name as previously, choose Yes to overwrite the old, recycled program log with the new reference numbers



Step
nine

The following image shows a comparison of the reference numbers in a recycled log that has been copied and pasted in to a new log:

	Cue	Time	Name	Length	Category	Description	Flag1	Flag2	RefNum	AbsPosition		Cue	Time	Name	Length	Category
▶	@	00:00:00	*		MACRO	MIXVOLUME	0		85025395	1		▶	+	00:01:00		MACRO
	+	00:00:00	8800	01:00	AUDIO	JAZZ SATEL	0		85025759	X 2			@	00:00:00		MACRO
	+	00:01:00					0		85025396	3			+	00:00:00	8800	AUDIO
	+	00:01:00					0		85025397	4			+	00:01:00		AUDIO
	@	00:06:00					0		85025765	X 5			@	00:06:00		MACRO
	+	00:06:00					0		85025398	6			+	00:06:00		MACRO
	+	00:06:00					0		85025399	7			+	00:06:00		MACRO
	+	00:06:00	31351				0		85025400	8			+	00:06:00	31351	AUDIO
	+	00:24:40	2044				0		85025402	9			+	00:24:40	2044	AUDIO
	+	00:25:10	2007	00:30	AUDIO	FRESH AIR	0		85025403	10			+	00:25:10	2007	AUDIO
	+	00:25:40	GCL3SUN	00:30	AUDIO	GULF COAS	0		85025404	11			+	00:25:40	GCL3SUN	AUDIO
	+	00:26:10	SNAP3TDT	00:30	AUDIO	SNAP JUDG	0		85025405	12			+	00:26:10	SNAP3TDT	AUDIO
	+	00:26:40	31353	31:00	AUDIO	JAZZ SATEL	0		85025406	13			+	00:26:40	31353	AUDIO
	@	00:57:40			MACRO	REM BREA	0		85025408				+	00:57:40		MACRO
	+	00:57:40			MACRO	MIXVOLUME	0		85025409	15			+	00:57:40		MACRO
	+	00:57:40	1040	00:20	AUDIO	JAZZ SATEL	0		85025769	X 16			+	00:57:40	1040	AUDIO
	+	00:58:00	2012	00:30	AUDIO	MORNING E	0		85025410	17			+	00:58:00	2012	AUDIO
	+	00:58:30	1A3	00:30	AUDIO	1A TOMOR	0		85025411	18			+	00:58:30	1A3	AUDIO
	+	00:59:00	GCL3	00:30	AUDIO	GULF COAS	0		85025412	19			+	00:59:00	GCL3	AUDIO
	+	00:59:30	2046	00:30	AUDIO	HERE AND	0		85025413	20			+	00:59:30	2046	AUDIO
	+	01:00:00	8800	01:00	AUDIO	JAZZ SATEL	0		85025414	21			+	01:00:00	8800	AUDIO
	+	01:01:00			MACRO	SERIAL *00	0		85025771	X 22			+	01:01:00		MACRO
	+	01:01:00			MACRO	MIXVOLUME	0		85025415	23			+	01:01:00		MACRO
	@	01:06:00			MACRO	REM BREA	0		85025783	X 24			@	01:06:00		MACRO
	+	01:06:00			MACRO	MIXVOLUME	0		85025777	X 25			+	01:06:00		MACRO
	+	01:06:00			MACRO	SERIAL *00	0		85025418	26			+	01:06:00		MACRO
	+	01:06:00	31356	18:40	AUDIO	JAZZ SATEL	0		85025775	X 27			+	01:06:00	31356	AUDIO
	@	01:24:40	BIRDCRUISE	00:30	AUDIO	BIRDING CF	1	01:24:40	85025421	28			@	01:24:40	BIRDCRUISE	AUDIO

Left: Recycled program log with out of order reference numbers, potentially causing issues with playing items out of order or at wrong times

Right: Recycled program log pasted in to new program log. Reference numbers are now sequential from bottom

recycled to new comparison

Help Topics:

Last updated Thu, Jul 10 2014 1:25pm

Please Wait!

Please wait... it will take a second!