



Broadcast
Software
International



Frequently Asked Questions

Windows Configuration Suggestions for Broadcasting

Operating System:

Windows 10 **Professional** 64bit

DO NOT USE HOME VERSIONS. For full access to settings, PRO version is required.

Hard Drives:

64K Allocation unit size

NTFS File System

Full Format

Disabled Indexing Service (under disk properties)

Separate hard drives for Audio and System

CPU:

We prefer Genuine Intel (Core 2 Duo, Core I series, or Xeon) CPUs

Drivers:

All latest drivers for motherboard and 3rd party hardware (Video Card, AudioScience, Sentinel Hardware Key)

Memory:

Namebrand

8 gigs

Audio Cards:

AudioScience 5xxx or 6xxx series.

Network Adapters: Ensure multiple NICs other than the one used are disabled via Device Manager.

Windows OS Settings:

Notifications & Actions

This menu can be accessed from the **Settings > System** menu within Windows. While it is possible to turn off all notifications from apps and senders, it is not necessary. Please uncheck the following options:

- Allow notifications to play sounds
- Show me the Windows welcome experience after updates and occasionally when I sign in to highlight what's new and suggested
- Suggest ways I can finish setting up my device to get the most out of Windows
- Get tips, tricks, and suggestions as you use Windows

If you have any specific apps installed you wish to disable notifications for, you can do so in the list of apps under “Get notifications from these senders” section of the menu. See **Figure 1.1**.

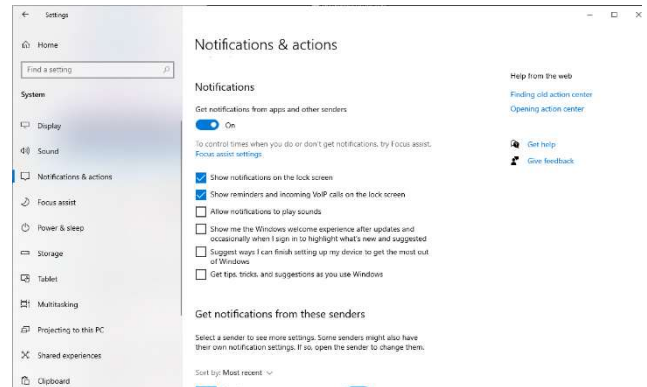


Figure 1.1

Power & Sleep

From the same **Settings > System** menu you can access the **Power & Sleep** menu. You'll want to make sure both the “**Screen**” and “**Sleep**” options are set to **Never**. Once done, locate the “**Additional power settings**” option on the right of the window. This will open the advanced power options within the control panel. Under “**Choose or customize a power plan**” select “**High performance**”. See **Figure 2.1** and **2.2**. Under the “Choose what the Power buttons do” option, select sleep button action → Setting: **Do Nothing**.

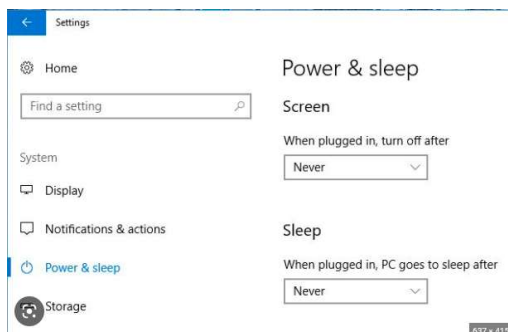


Figure 2.1

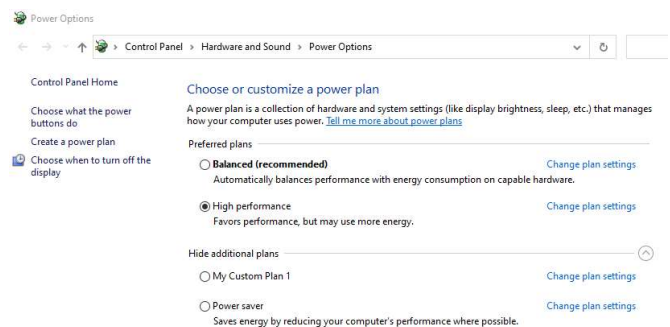


Figure 2.2

From the “Choose or customize a power plan” window, click on the “Change plan settings”, then click on “Change advanced power settings” (**Figure 2.3 & 2.4**). This will bring up the advanced settings for power options. You'll want to adjust the following settings:

- Hard Disk → Turn off Hard Disk after → Setting: **Never**
- USB Settings → USB Selective suspend setting → Setting: **Disabled**.

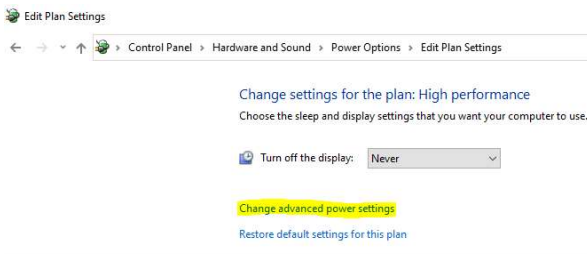


Figure 2.3

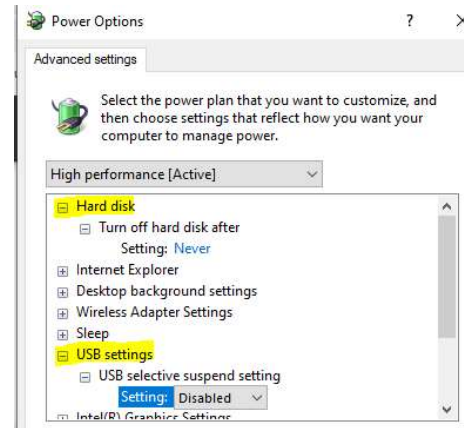


Figure 2.4

Time & Language

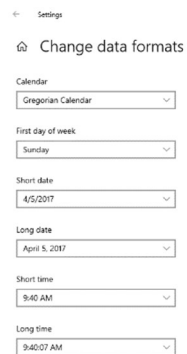


Figure 3.1

From **Settings**, you will see the **Time & Language** menu, then click on the “**Region**” option on the left. Scroll down to the “**Change data formats**” option at the bottom of the menu and select it. On this page ensure the following settings are correct (**Figure 3.1**):

- Short Date: **MM/dd/yyyy**.
- Long Date: **MMMM dd, yyyy**.

Sound

In the bottom right hand corner of Window, right click the Volume Icon. From the list, select “**Sounds**” to pull up the Sound menu (**Figure 4.1**). Please make sure the following selections are made for each tab:

- Playback tab
 - Select last device of first audio card and click the Set Default button.
- Record tab
 - Select last device of first audio card and click the Set Default button
- Sounds tab
 - Sound Scheme: No Sounds.
 - Uncheck “Play Windows Startup Sound”.
- Communications tab
 - When Windows detects communications activity: Do nothing.

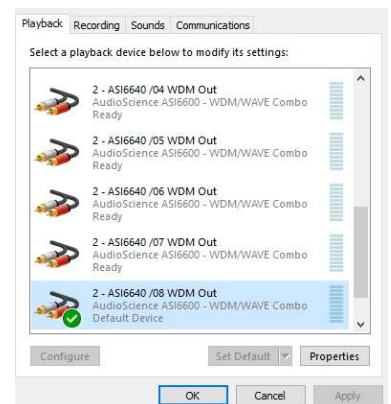


Figure 4.1

Next, right click on the Volume Icon once again, and select **Open Sound settings**. Then scroll down and click on **App volume and device preferences**. On this screen, select each of the output devices that will be used for playback and set the **System sounds** to 0. (Figure 4.2)

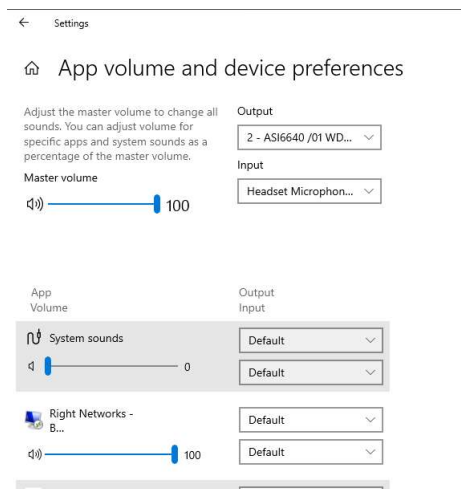


Figure 4.2

Advanced Playback

Return to the playback tab and right click on the first audio device that will be used for broadcasting. Select **Properties**, then select the **Advanced** tab (Figure 5.1). Make sure both boxes under **Exclusive Mode** are unchecked then click **Apply**. You will want to repeat this step for all playback devices listed that will be used for broadcasting.

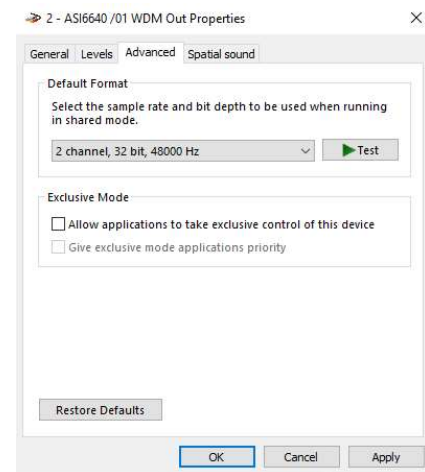


Figure 5.1

Security and Real-time Protection

From **Settings**, select **Update & Security**. Then select **Windows Security** on the left. Under **Protection Areas** click on **Firewall & network protection**. You will then want to turn off the firewall for **Domain**, **Private**, and **Public** networks. (See Figure 6.1)

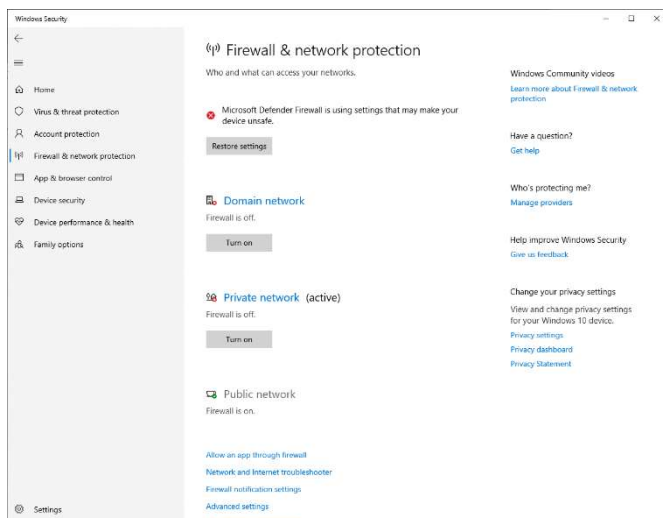


Figure 6.1

Next, click on **Virus & threat protection** on the left of the screen. Under **Virus & threat protection settings**, click on **Manage settings**. Proceed to turn off **Real-time protection**, **Cloud-deliver protection**, **Automatic sample submission**, and **Tamper Protection**. (Figure 6.2)

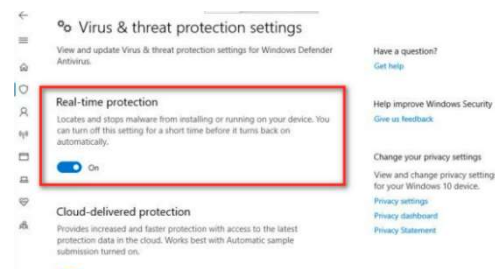


Figure 6.2

Next, open the Group Policy by using the Windows button & R key and typing **gpedit.msc**. After hitting the enter key, you will want to follow the folder path: **Computer Configuration > Administrative Templates > Windows Components > Microsoft Defender Antivirus > Real-time Protection**. Once you have selected the **Real-time Protection** folder on the left, find the **Turn off real-time protection** setting on the right. Right click on it and select **Edit**. In the Window, select **Enable** and then click **Apply**. (Figure 6.3)

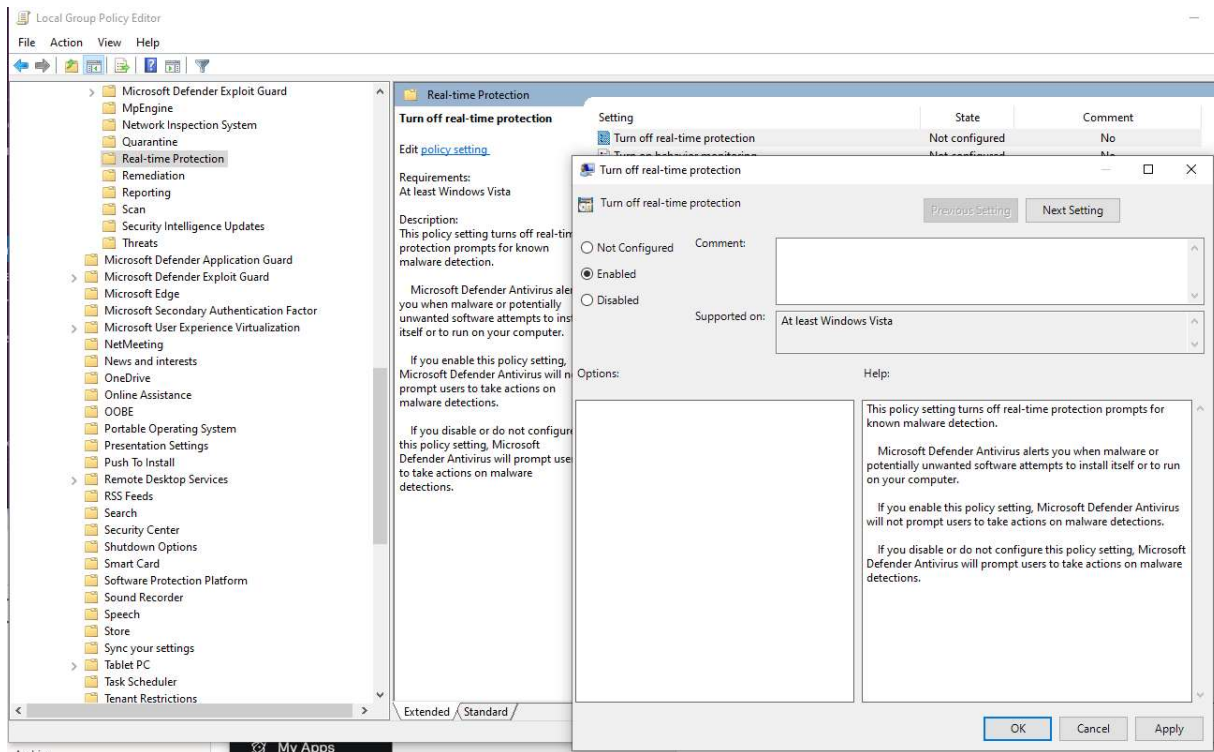


Figure 6.3

User Account Control

In the search bar, type “User Account Control” and select **Change user account control settings**. This will open the User Account Control Settings window. Set sidebar all the way down to **Never Notify**. (Figure 7.1)

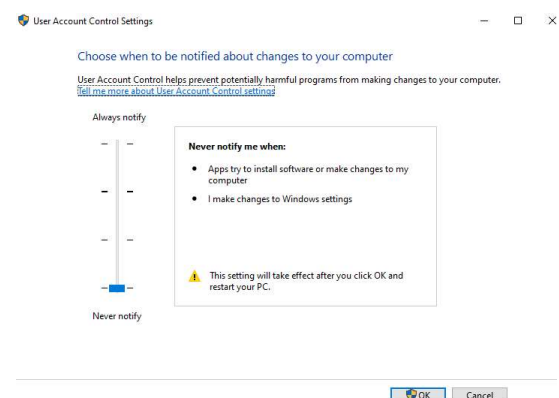


Figure 7.1

Network & Sharing

From **Settings**, select **Network & Internet** and scroll down and select **Network and Sharing Center**. Once the Network and Sharing Center window pops up, select **Change advanced sharing settings** on the left. Make sure **Turn on network discovery** and **Turn on file and printer sharing** are selected under both **Private** and **Guest or Public** networks. Under **All Networks**, make sure **Turn off password protected sharing** is selected under **Password protected sharing**. (Figures 8.1 & 8.2)

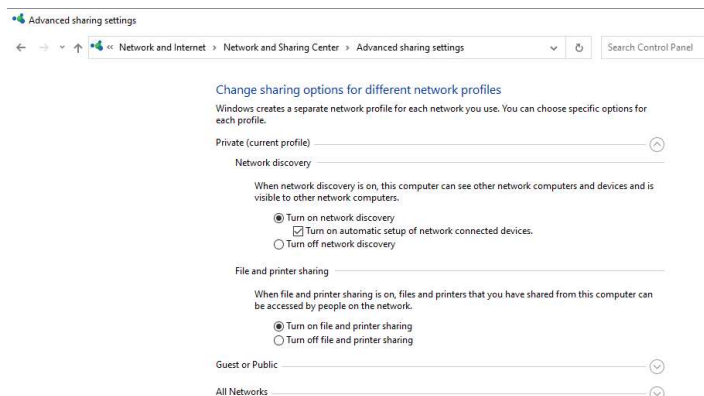


Figure 8.1

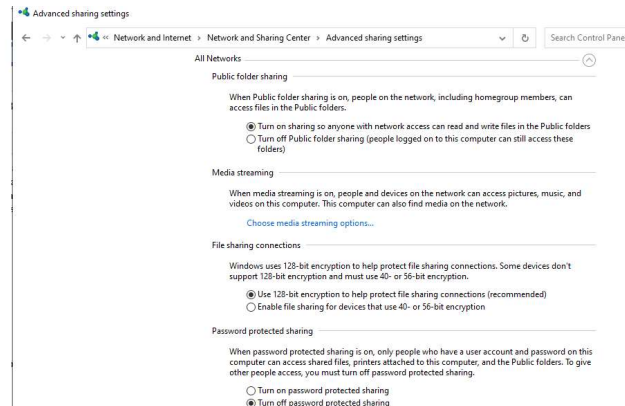


Figure 8.2

Windows Update

You will want to completely disable automatic updates for Windows. Once again, pull up the Group Policy by using the Windows button & R key and typing **gpedit.msc**. After hitting the enter key, you will want to follow the folder path: **Computer Configuration > Administrative Templates > Windows Components > Windows Update**. You will want to disable the following settings on the right: **Allow Automatic Update immediate installation**, **Configure Automatic Updates**, and **Allow updates to be downloaded automatically over metered connections**. (Figure 9.1)

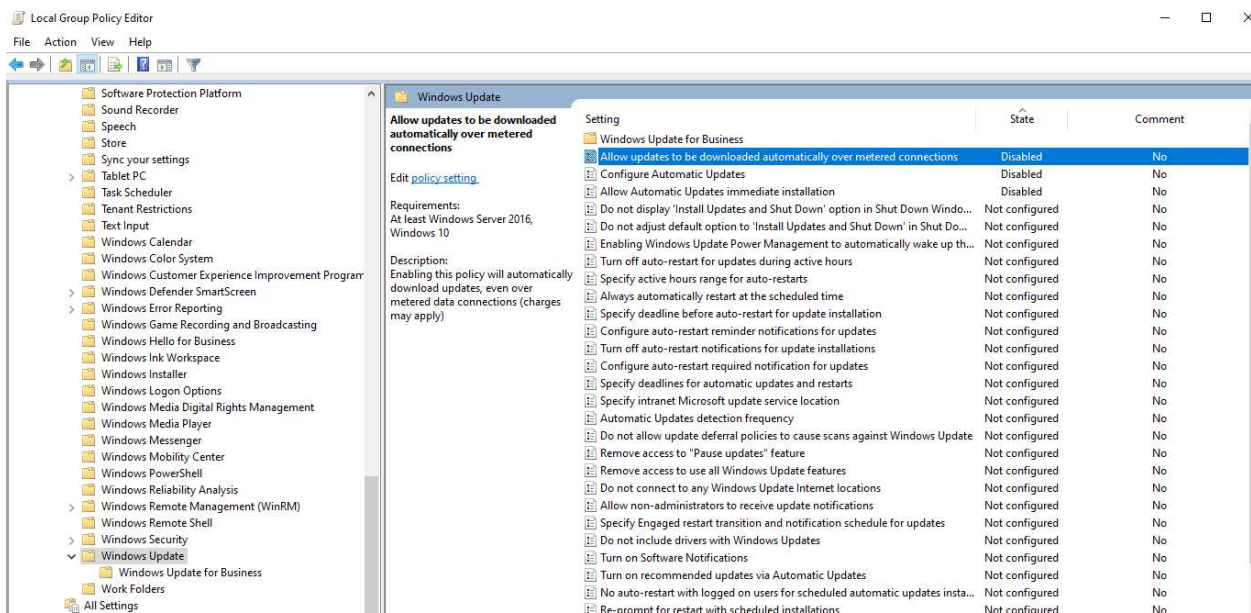


Figure 9.1