



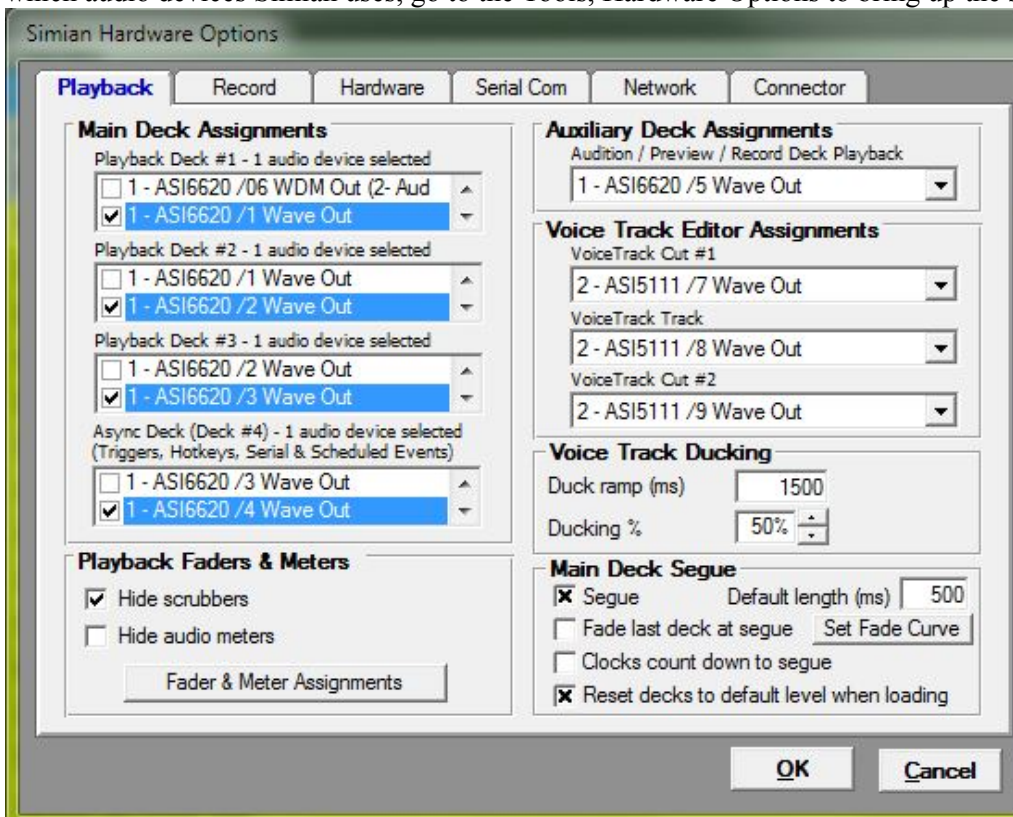
## Frequently Asked Questions

All Categories » Simian

### Audio Science Sound Card Configuration Suggestions (Legacy Audio Engine)

which audio devices Simian uses, go to the Tools, Hardware Options to bring up the screen shown below.

To assign



The ASI cards are easily identified by their model number, followed by '1 Wave Out', '2 Wave Out', '3 Wave Out', '4 Wave Out' etc.

When multiple ASI cards are installed, the Wave Out devices will continue to increment, so the second card will have

‘Wave Outs 5, 6, 7 and 8’; the third ‘9, 10, 11, 12’ etc.

**Note. The Legacy Audio Engine available in Simian release prior to 2.3 and for 2.3 users who are running on a 32-bit operating system will need the Legacy 32-bit WAVE drivers. If you only have WDM out available and not Wave Out, reinstall the ASI COMBO driver and be sure to check the option to include Legacy 32-bit WAVE drivers.**

For Simian 2.3 users running on a 64-bit operating system, you will use the WDM drivers with the new audio engine for the playback and record decks but will still want the WAVE drivers installed for using audio pass through mixers.

In the Main Deck Assignments (Simian’s main decks 1, 2 and 3), you’ll only see two audio card devices at a time; you’ll need to scroll through the list to select the correct devices. The Async Deck is also known as Simian’s Deck 4, this normally hidden deck is where Hot Keys and Triggers are played.

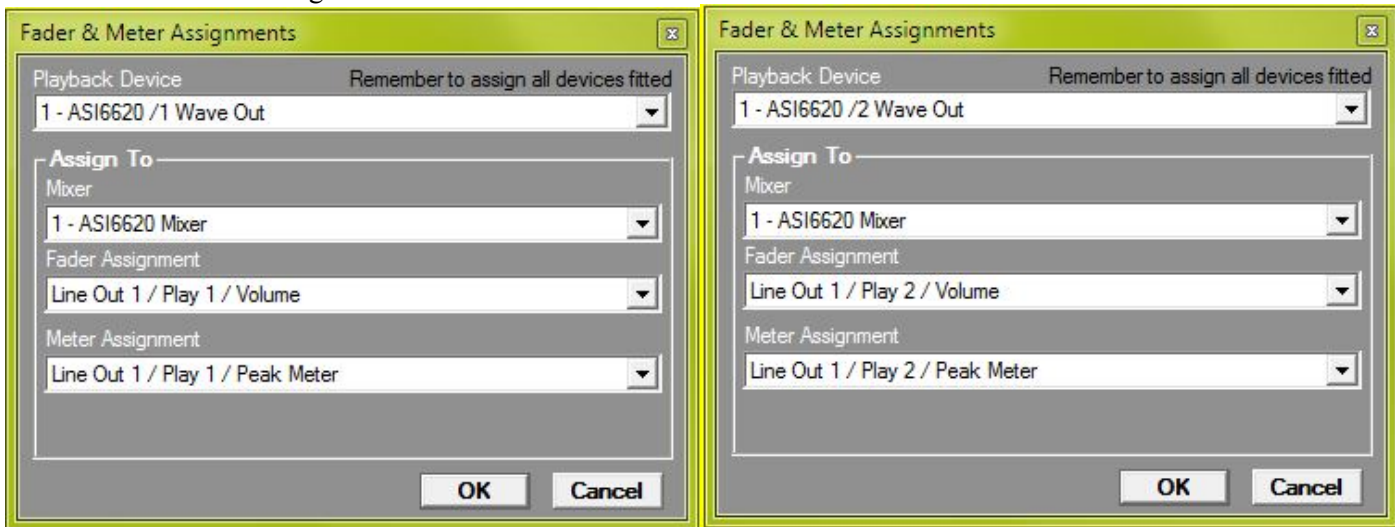
Under normal circumstances, you should make sure that you only have ‘1 (device) selected’ for each Deck.

The Auxiliary and Voice Track Decks are configured in a similar way, but this time from a drop-down box instead of a list of check-boxes.

The illustration shows a typical Simian setup with an ASI audio card. If you are using a second ASI soundcard in your machine, use this for your Audition Deck and Voicetrack Editor assignments.

### [Simian] Fader and Meter Assignments

Simian needs to know which mixer and volume control to associate with each of the audio devices, so that it can fade out mixers and accomplish voice-track ducking. To bring up the settings, click the Fader & Meter Assignments button from Simian’s Hardware Settings.



The Playback Device is the Wave Output device on the audio card. With ASI cards, you’ll see a 1 – followed by the model number for the first card, 2 – for the second etc. The Wave Out number will increment depending how many cards are installed as discussed before.

Now choose the Mixer to assign to the Playback Device that you have selected. These correspond to the mixers on the Audio Science Mixer application (see diagram below). Where the audio card has multiple physical outputs, there will be a Line Out 1, 2 (and 3 and 4 if the card supports it).

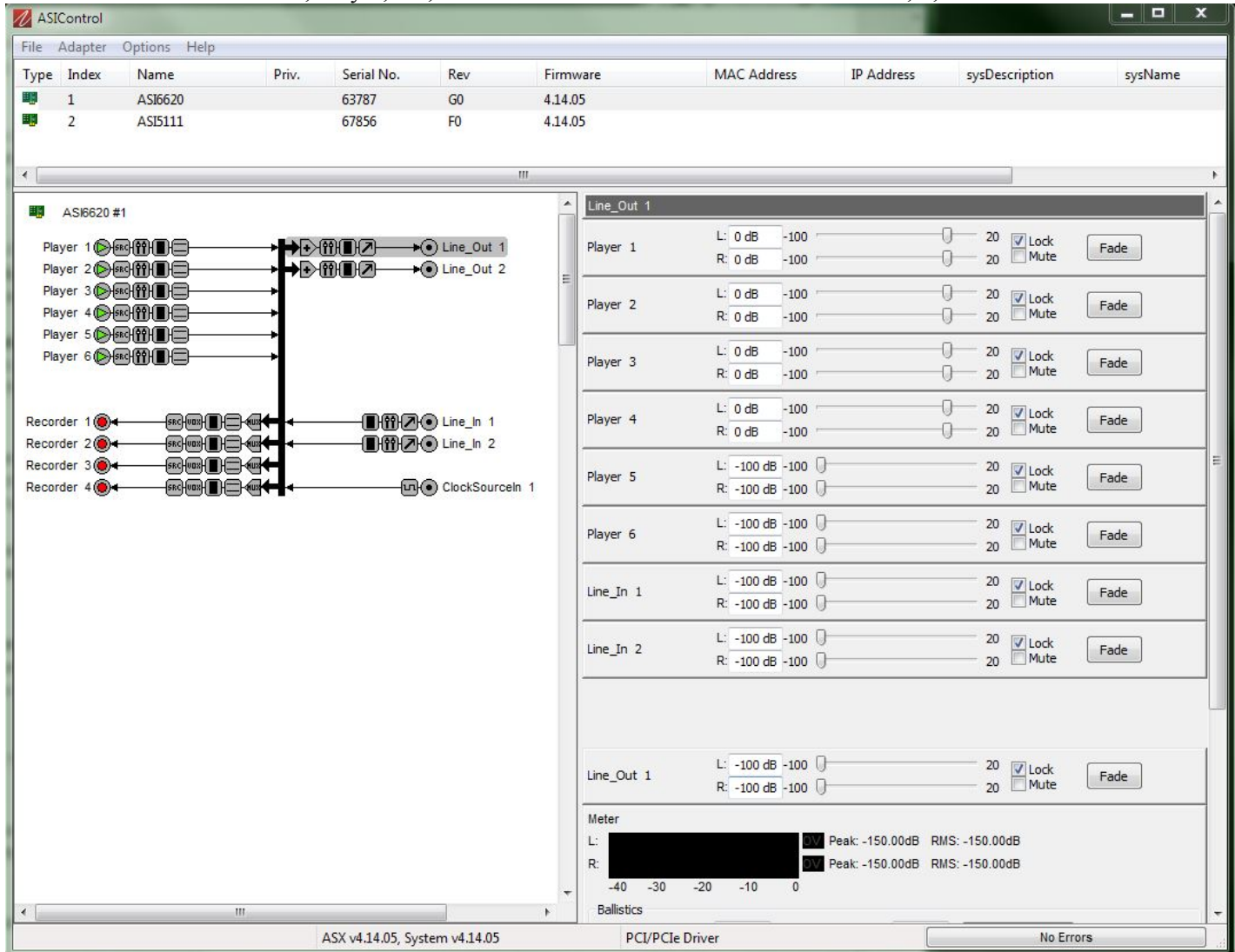
This is an important step as the cards that have multiple physical outputs, have a Play 1, 2, 3 and 4 controls for each physical output. Make sure you have selected the correct physical output otherwise Simian will be fading up and down the wrong audio mixer! Finally, the Meter Assignment tells Simian which meters on the audio card to display while playing through the selected Playback Device. Again, ensure the correct Line Output is selected for each device.

You should go through ALL the Playback Devices displayed and check that they are all configured correctly. The ‘Restore Default Assignment’ button will try to ascertain a default setting, however this should not be relied upon as some audio cards display their record devices before the playback devices – or you may wish to route to the second audio output.

### Audio Science Mixer Application

Play 1, 2, 3 and 4 are displayed as 1 Wave Out, 2 Wave Out, 3 Wave Out and 4 Wave Out in Simian.

When a second card is added, Play 1, 2, 3, and 4 of the second card become Wave Out 5, 6, 7 and 8.



As can be seen from the diagram, each player can be routed to each physical output (Line Out 1 or 2). Furthermore, Line Ins can be routed to Line Outs. To raise or lower each Line In or Player for the Line Out, simply drag the slider to the left or right. To turn the level all the way down or bring it back to zero, click the “Fade” button. To adjust overall volume, raise or lower the Line Out levels.

Some ASI cards have different adapter modes. To change the mode click on the name of the Audio card (right above “Player 1”) and choose the mode you want from the dropdown box.

File Adapter Options Help

Type	Index	Name	Priv.	Serial No.	Rev	Firmware	MAC Address	IP Address	sysDescription
	1	ASI6620		72206	G3	4.18.10			

ASI6620 #1

Adapter 1

Adapter Information

Serial Number: 72206

Hardware Revision: G3

DSP Software Version: 4.18.10

DSP Utilization: 02%

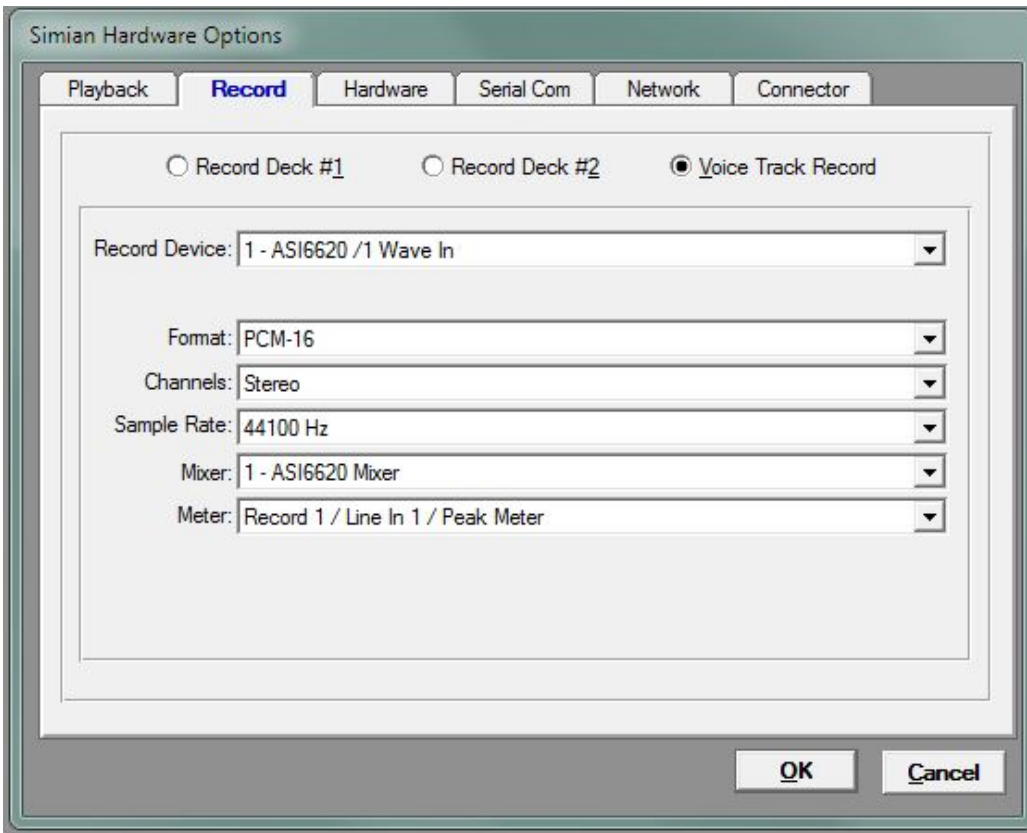
---

Adapter Mode

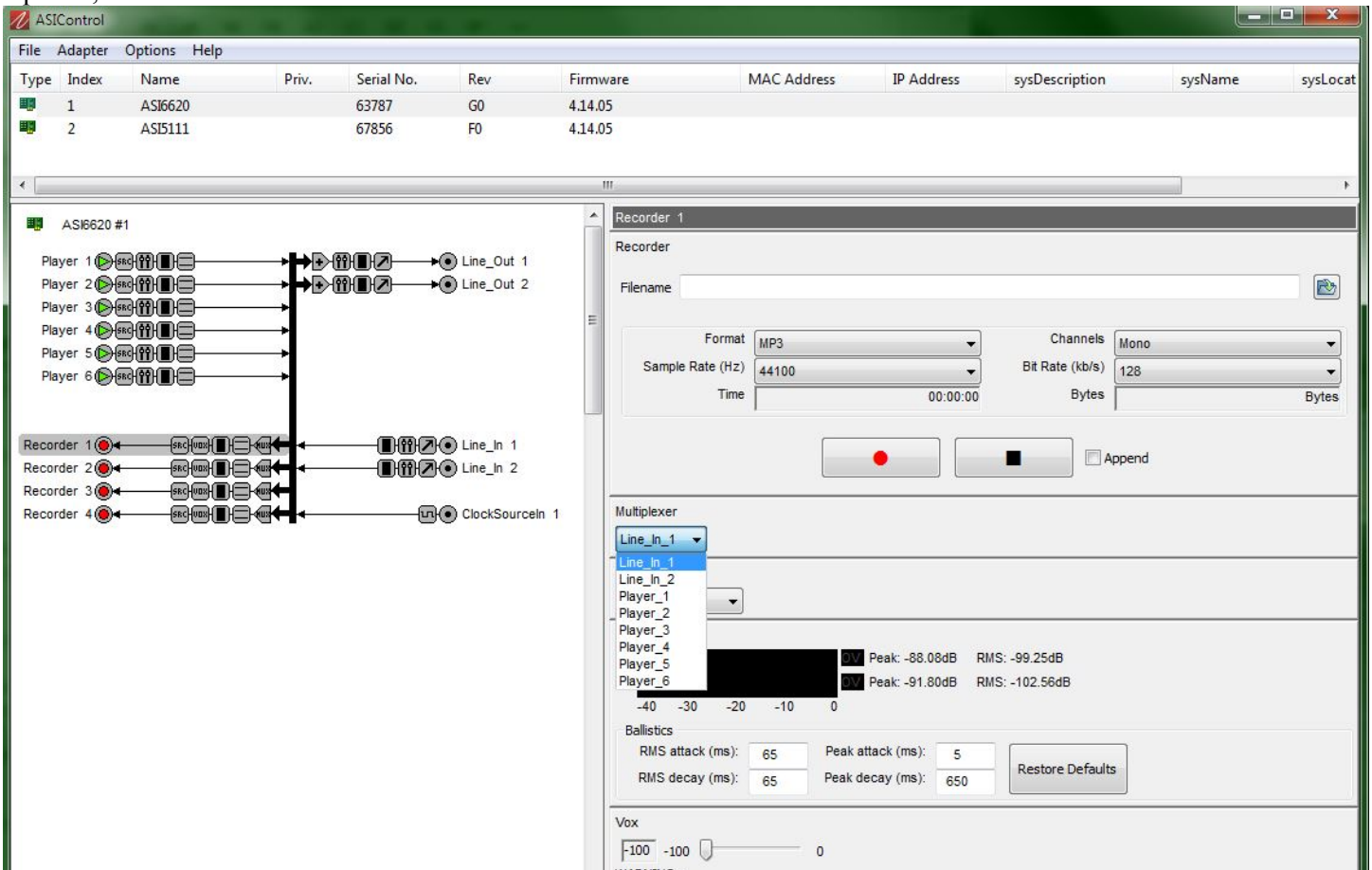
6-Play v

### [Simian] Record Deck Assignments

Any of the Line Inputs can be selected to record using Simians RECORD macro. You can designate which recorder uses which line in (stereo or mono) by selecting the option in the “Multiplexer” drop down box on the ASI Mixer Panel.



You then must designate which “Recorder” Simian uses for its Record Decks. You can set these under Tools, Hardware Options, Record Tab.





1 Wave In corresponds to “Recorder 1” in ASI Control, 2 Wave In corresponds with “Recorder 2” in ASI control and so on. Once again we choose the Mixer for our ASI card. For the Meter we select the Peak Meter for whatever Recorder we want to use.

### [Simian Mixer Panel]

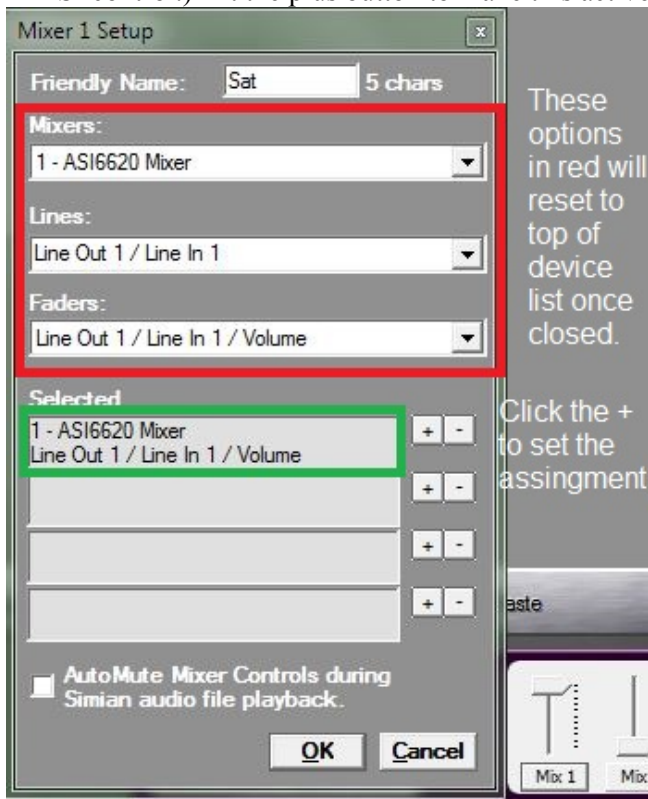
Simian can control any of the Audio Science Mixer controls through the Macro commands, or using the on-screen mixers.

Typically, these are used to insert News or Satellite feeds automatically using the: MIXVOLUME x, 100 and MIXVOLUME x, 0 Macros where x is the Simian Mixer number (there are 16 in total.)

Under each of the Mixers in Simian’s Mixer panel is a button that will bring up the Mixer Setup. Start off by typing in a friendly name for the Simian Mixer.

Now select which Audio Card Mixer you wish to control, the ASI cards will have a familiar legend, so it’s easy to see which card you are selecting.

Then chose which Lines of the Mixer you wish to control; in this case, we’ve selected the Line Out 1 /Line In 1 (this is the pass-through audio Line In 1 going out of Line Out 1 in ASI Control). The fader option under Faders: will be limited at this point, we want to control the Line Out 1 / Line In 1 / Volume (the Volume of Line In 1 that is going out of Line Out 1 in ASI control.) Hit the plus button to make this active and then hit “OK”.



Note - If you do not have the "ASIxxxx Mixer" option, then you will need to install or reinstall the ASI Combo driver and check the box to "include Legacy 32-bit WAVE driver" during the installation options process.

You can repeat this process on Simian Mixers 2 and 3, setup Line Out 1 / Line In 2 and Line Out 1 / Line In 3 (where the ASI card supports multiple inputs). The mixers Fader assignment will be Line Out 1 / Line In 2 (or 3) / Volume.

### Help Topics:

Last updated Thu, Jul 10 2014 1:25pm

### Please Wait!

Please wait... it will take a second!