



Broadcast  
Software  
International



## Frequently Asked Questions

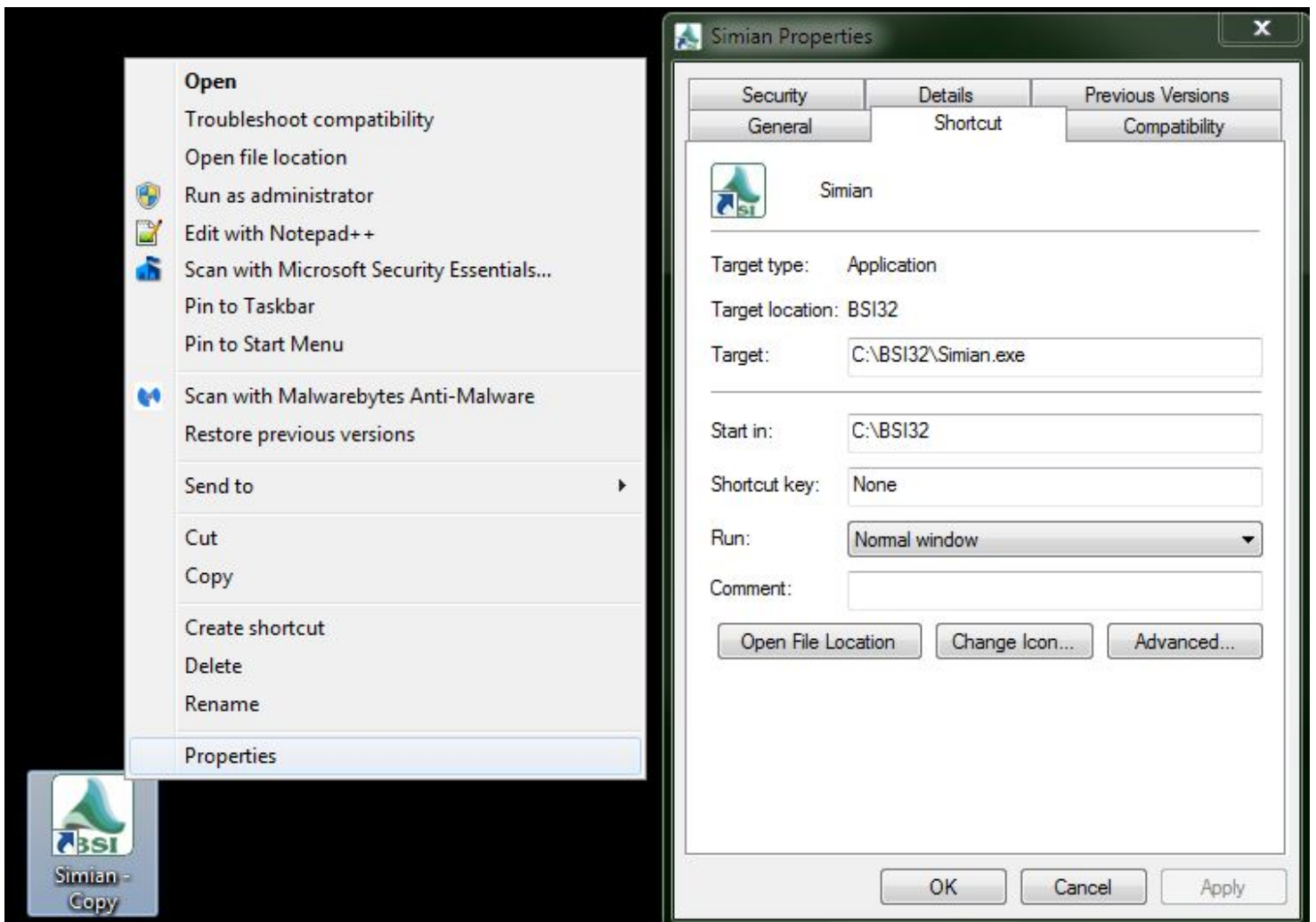
All Categories » Simian

### Shortcuts for Air & Production modes on multi-instance licenses

Simian

has up to 9 different sessions. Each session has its own set of Program Options and Hardware Options settings. With a non-multi instance license, when you launch Simian it will load in to air mode and any additional instances of Simian you launch after that will run in production mode. With a multi-instance license, all additional instances of Simian will instead launch in air mode. The second instance of Simian can be put in to session 2, and configured differently than session 1. You will need sound card resources for each session to have its own playback device assignments and outputs. For example, one AudioScience sound card with 2 or more outputs or two separate ASI cards.

Here are instructions for creating shortcuts to open Simian in to a specific mode and session, which will make it easy to manage.

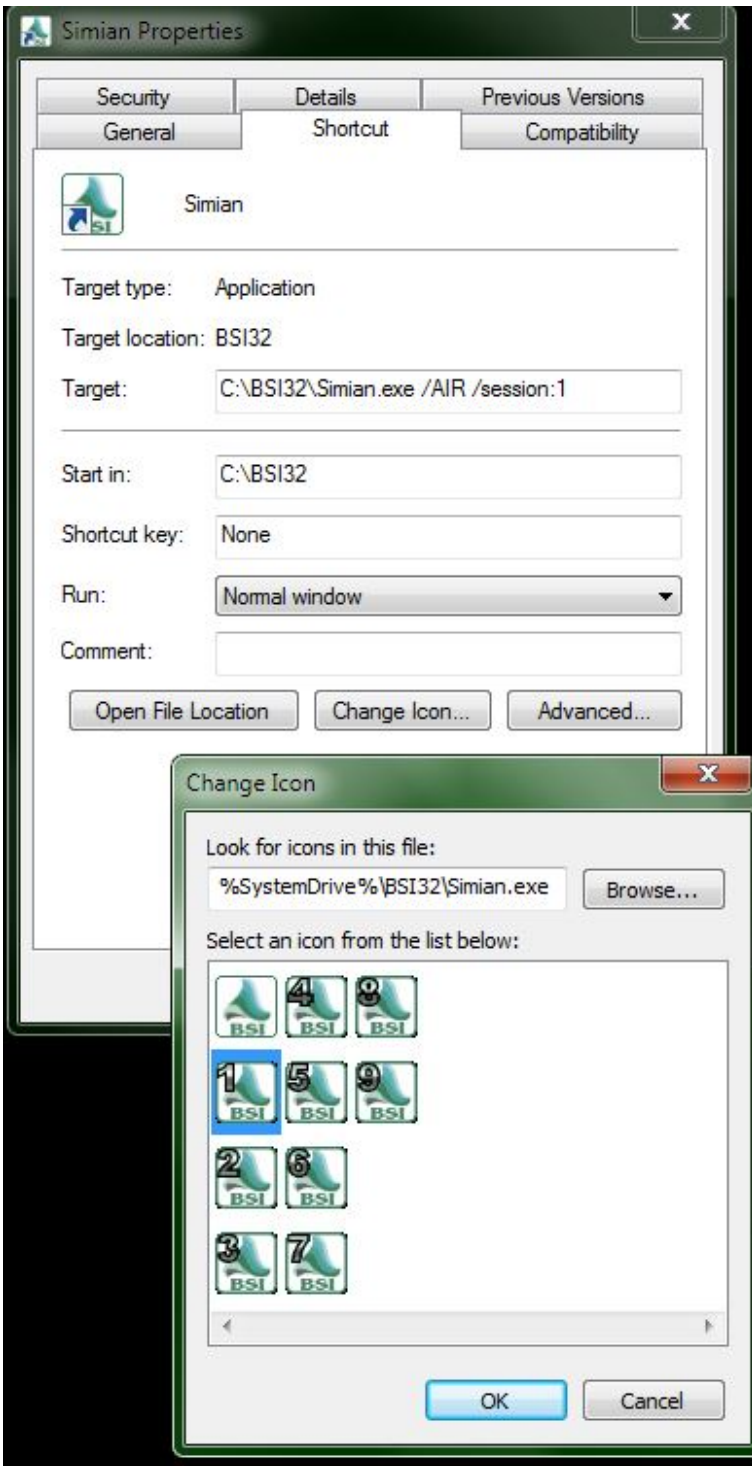


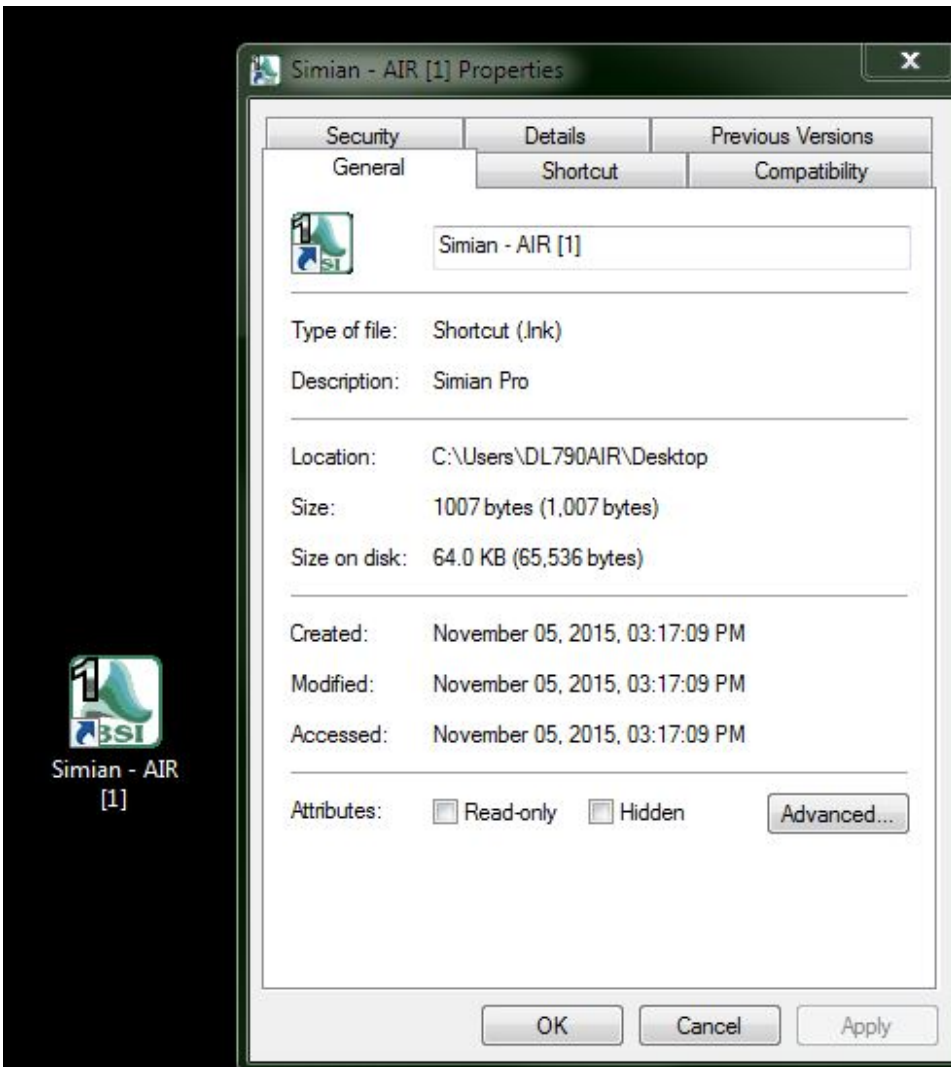
First start with creating the Simian shortcut to Air mode in session 1:

- Right click on the Simian desktop shortcut and choose Copy
- Right click in an empty space on the desktop and choose Paste
- On the new Simian copy shortcut, right click it and choose properties
- Select the Shortcut tab and in the Target field, enter:

C:\BSI32\Simian.exe /AIR /session:1

- Click the Change Icon button and select the icon with a "1" on it.
- Select the General tab and in the top field, change the short label to "Simian AIR [1]" or Simian Stream"
- Click Apply and OK at the bottom





For a second Air mode shortcut to session 2:

- Right click on the Simian desktop shortcut and choose Copy
- Right click in an empty space on the desktop and choose Paste
- On the new Simian copy shortcut, right click it and choose properties
- Select the Shortcut tab and in the Target field, enter:

C:\BSI32\Simian.exe /AIR /session:2

- Click the Change Icon button and select the icon with a "2" on it.
- Select the General tab and in the top field, change the short label to "Simian AIR [2]" or "Simian FM"
- Click Apply and OK at the bottom

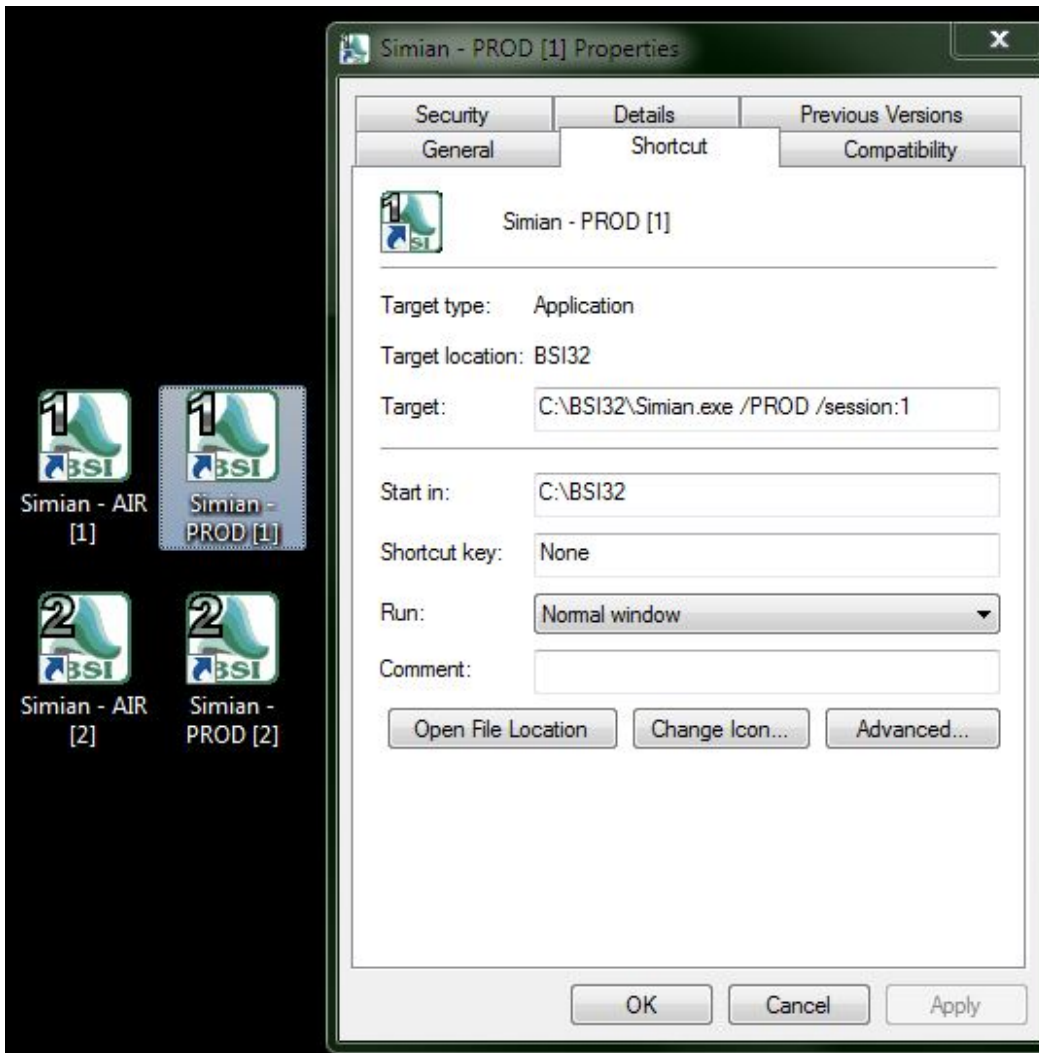
Here are the instructions for making a production mode Simian shortcut into session 1:

- Right click on the Simian desktop shortcut and choose Copy
- Right click in an empty space on the desktop and choose Paste
- On the new Simian copy shortcut, right click it and choose properties
- Select the Shortcut tab and in the Target field, enter:

C:\BSI32\Simian.exe /PROD /session:1

- (If you would like to give the Simian Production a different icon, click the Change Icon button and select your preference)

- Select the General tab and in the top field, change the short label to: Simian PRODUCTION [1]
- Click Apply and OK at the bottom



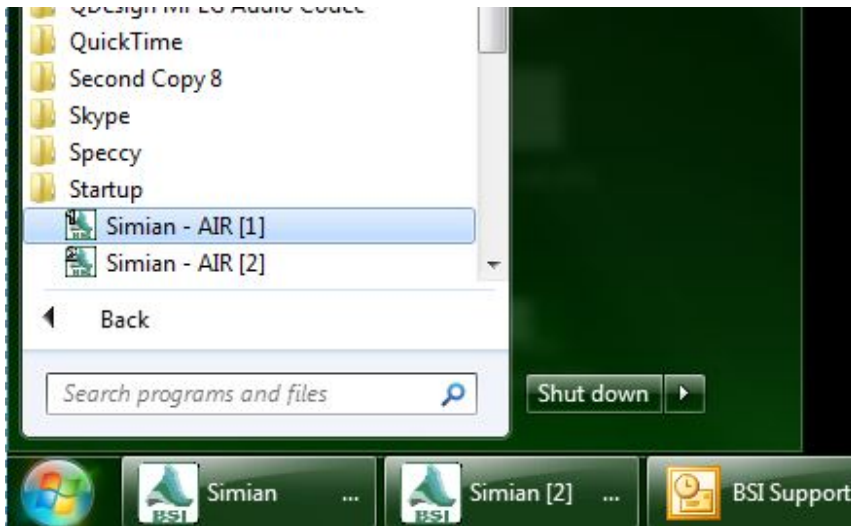
Here are the instructions for making a production mode Simian shortcut into session 2:

- Right click on the Simian desktop shortcut and choose Copy
- Right click in an empty space on the desktop and choose Paste
- On the new Simian copy shortcut, right click it and choose properties
- Select the Shortcut tab and in the Target field, enter:

`C:\BSI32\Simian.exe /PROD /session:2`

- (If you would like to give the Simian Production a different icon, click the Change Icon button and select your preference)
- Select the General tab and in the top field, change the short label to: Simian PRODUCTION [2]
- Click Apply and OK at the bottom

Remove the general Simian shortcut from the Windows Startup folder and add the two AIR mode shortcuts in there instead.



## Help Topics: BSI Support

Last updated Thu, Jul 10 2014 1:25pm

### Please Wait!

Please wait... it will take a second!