

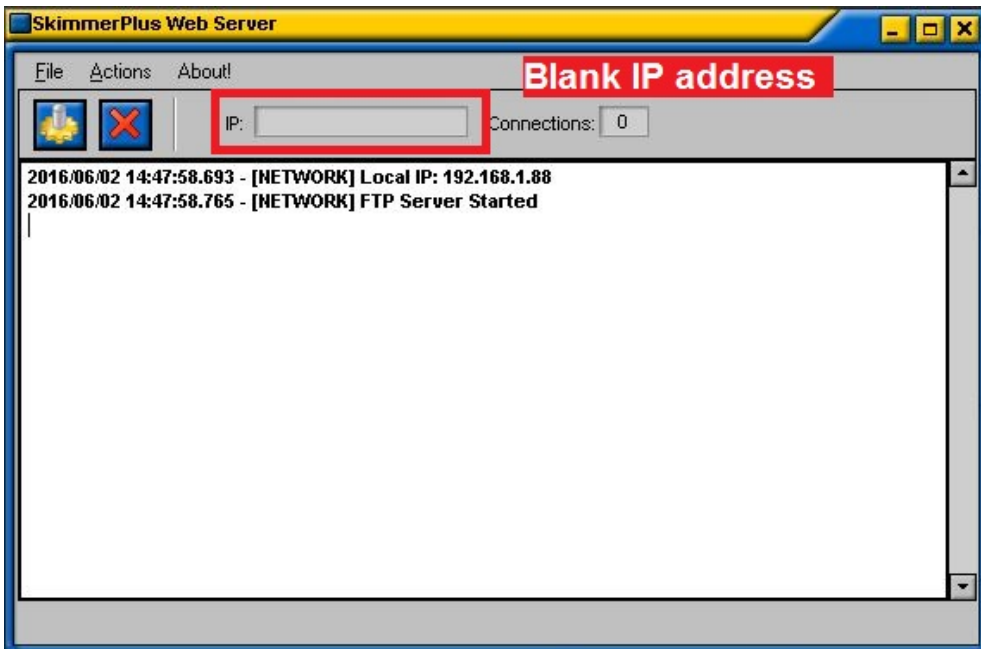


## Frequently Asked Questions

All Categories » Skimmer Plus

### SkimmerPlus Web Server on Windows 10

When using the SkimmerPlus Web Server with Windows 10, the default settings may not work. The SkimmerPlus Web Server uses port 80 by default. A service named World Wide Web Publishing Service is enabled and runs automatically by default on Windows 10 and uses port 80, blocking the SkimmerPlus Web Server from using that port. Web browsers, such as Chrome and Firefox will use port 80 as default when you put a web or IP address in the browser, which is why it is the default port. The telltale sign port 80 is in use is there will be no IP address listed in the SkimmerPlus Web Server when started.



There are two options to get the SkimmerPlus Web Server working...

#### Option A: Disable the World Wide Web Publishing Service.

1. Go to Control Panel > Administrative Tools > Services
2. Find "World Wide Web Publishing Service"
3. Right click and select "Stop"
4. Right click and select "Properties", then change "Startup type" to "Manual"

**World Wide Web Publishing Service Properties (Local Computer)**

General | Log On | Recovery | Dependencies

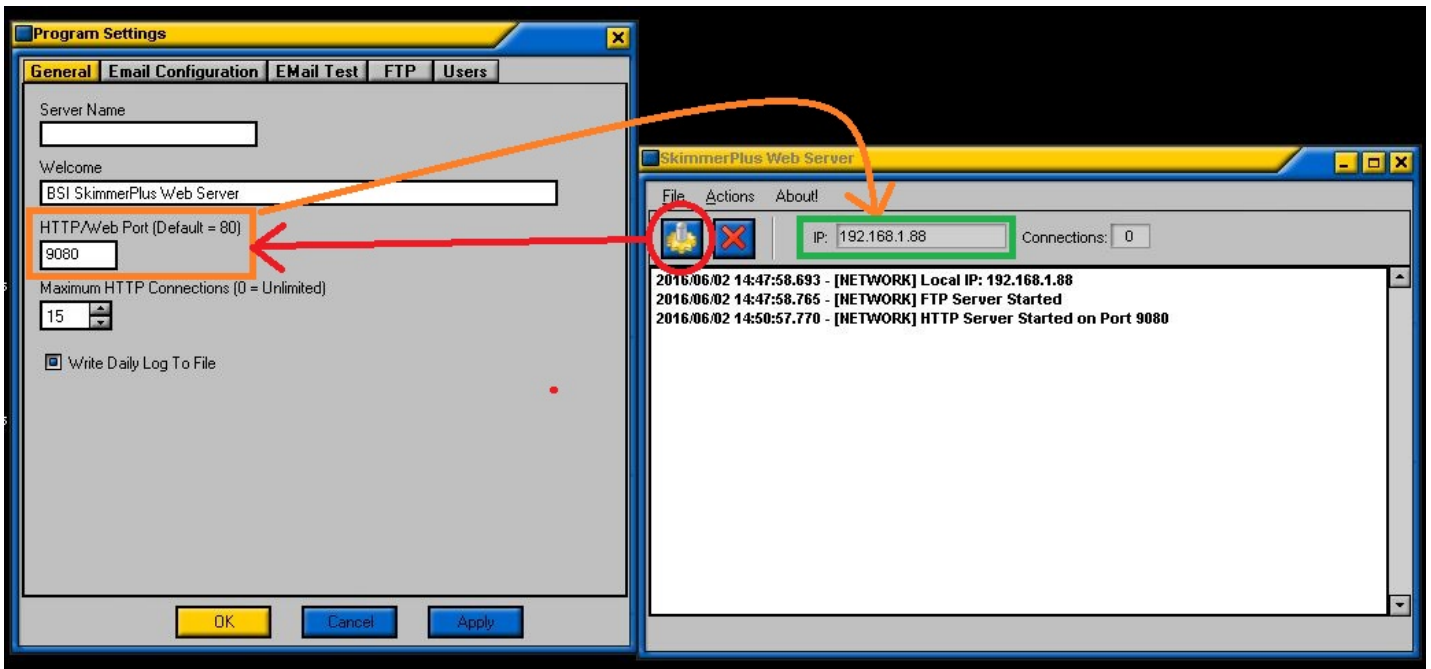
Service name: W3SVC  
Display name: World Wide Web Publishing Service  
Description: Provides Web connectivity and administration through the Internet Information Services Manager  
Path to executable: C:\WINDOWS\system32\svchost.exe -k iissvc  
Startup type: Manual  
Service status: Stopped  
Start Stop Pause Resume  
You can specify the start parameters that apply when you start the service from here.  
Start parameters:  
OK Cancel Apply

**Find World Wide Web Publishing in the Service (Local) list.**  
**Right click and choose Properties.**  
**Click Stop and set startup type to Manual**

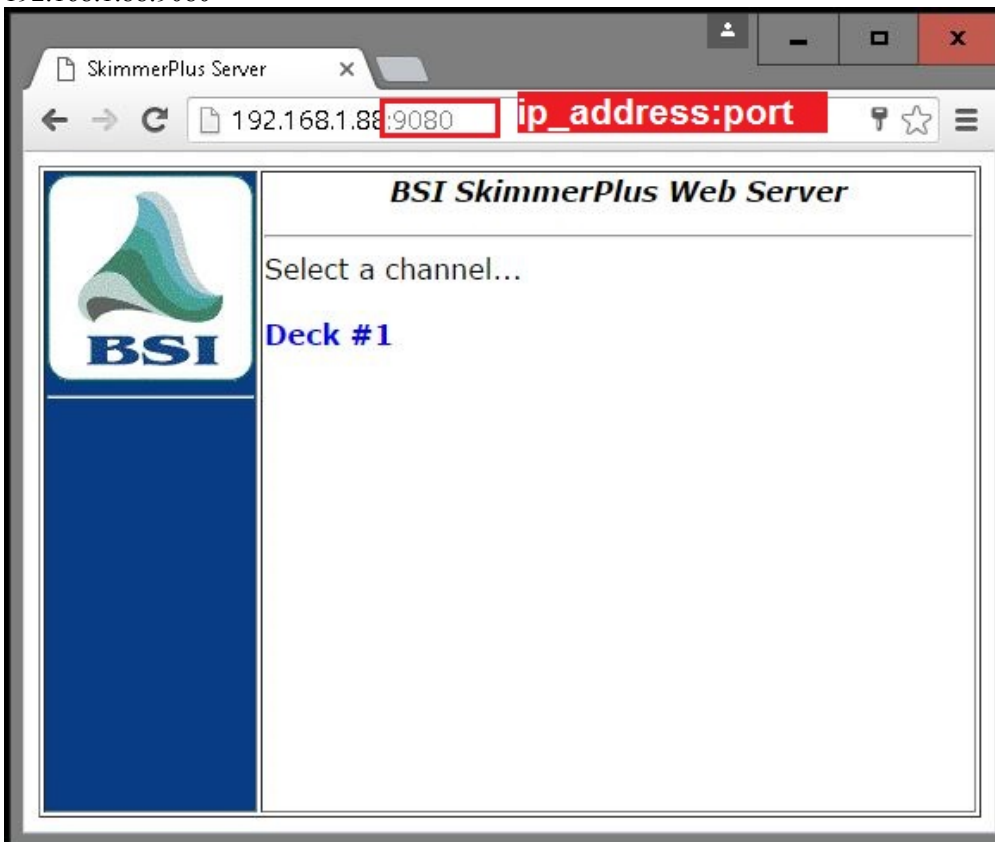
Name	Description	Status	Startup Type	Log On As
Windows Defender Service	Helps prote...	Running	Automatic	Local System...
Windows Driver Foundation...	Creates and...	Running	Manual (Trig...	Local System...
Windows Encryption Provid...	Windows E...		Manual (Trig...	Local Service
Windows Error Reporting Se...	Allows erro...			
Windows Event Collector	This servic...			
Windows Event Log	This servic...			
Windows Firewall	Windows F...			
Windows Font Cache Service	Optimizes			
Windows Image Acquisitio...	Provides ir...			
Windows Installer	Adds, mod...			
Windows License Manager ...	Provides ir...			
Windows Management Inst...	Provides a			
Windows Media Player Net...	Shares Wir...			
World Wide Web Publishin...	Provides W...	Running	Manual	Local System...

**Option B: Change the default port in the SkimmerPlus Web Server and have users connecting to the IP address also specify the port.**

In the SkimmerPlus Web Server application, go to Program Options and change the port to something likely unused, like 9080. Click OK and the IP address will populate in the IP box.



For users browsing to the SkimmerPlus Web Server IP address, they will also need to specify the port. For example:  
192.168.1.88:9080



### Help Topics:

Last updated Thu, Jul 10 2014 1:27pm

### Please Wait!

Please wait... it will take a second!